

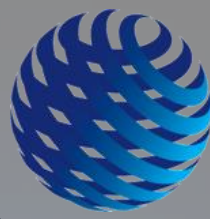


ALLIANCE FOR
LEADERSHIP LEARNING
leaders matter

2025

**Executive Challenge Academy
Leadership Program Catalogue**





ALLIANCE FOR
LEADERSHIP LEARNING
leaders matter

Contents

03 Welcome

04 Course Outlines

07 Faculty Profiles

09 Program Articulation

10 Contact Us



Welcome

The Executive Challenge Academy is delivered by Alliance for Leadership Learning - a social enterprise organisation dedicated to investing in place-based, cross sectoral leadership development.

At the Executive Challenge Academy (ECA), we understand the challenges and opportunities you face. By providing transformational leadership learning and development through our faculty of cutting-edge thought-leaders, experienced CEOs, alumni and systems change agents from Australia and overseas, we build leadership knowledge and experience so you can achieve great things.

We have over 16 years of practice in collaborative leadership development and transformation and are strategically positioned to work with you to create cutting edge practice in leadership. Our 'dynamic learning' philosophy of encouraging new ideas, new approaches and new connections creates an environment of rich development.

Look through our program offerings and see where your participant might take you!

Foundations for Leadership

Best suits

This program is best-placed for people in the first five years of leadership. This intensive short program provides the foundation for your development as a leader of positive change in your team, your organisation or community.

Program outcomes

By the end of the program you will:

- have greater understanding of your own leadership strengths
- be able to see and understand situations through multiple lenses
- Collaborate with cross-sector leaders to enrich perspectives and lenses
- be able to sustain confidence and equilibrium in the midst of pressure and uncertainty
- present your adaptive challenge findings to a panel of senior executives.

Modules

- Adaptive Leadership
- Leadership style, message & story
- Systems Leadership
- Live Case Study
- Adaptive Challenge.

2025 Program locations and commencement dates

- Townsville: commences 22 May
- Brisbane: commences 14 August

Format

3 and half days in person, 4 one hour tutorials over 8-10 weeks

Course fees

\$3000 per person (including GST)
Group size: 15 min. 25 max.

More details and enrolment form

[Brochure link](#)

Management Development Program

Best suits

The Management Development Program is designed for people who are engaged with strategic or public purpose leadership.

It is intended for mid-career people who wish to develop their managerial expertise and wish to obtain a Graduate Diploma qualification.

Program Modules

- Managing with confidence
- Management & Governance
- Team dynamics
- Media and message
- Systems Thinking
- Managing change
- Successful public policy
- Live Case Study
- Strategic Planning
- Application and presentation of Adaptive Challenge project relevant to your current work.

2025 commencement date

- Brisbane: commences 25 March

Format

There are four in-person sessions (total 4.5 days), 6 online self-paced learning modules and 9 online group tutorials spread out over 9 months.

Course fees

\$7700 per person (includes RPL fees for the qualification)
Group size: 15 min. 25 max.

More details and enrolment form

[Brochure link](#)

Senior Leadership Program

Best suits

The Senior Leadership Program is designed for mid-career professionals with strong management experience, who are preparing to take on enhanced leadership responsibilities.

Program outcomes

By the end of the program you will:

- Gain valuable insight into your leadership style and its impact.
- Build your skills to manage across boundaries.
- Learn how to create a successful change process.
- Create a detailed action plan related to a specific change initiative.

Modules

- Adaptive leadership
- Creating your leadership Framework
- Public Purpose Leadership
- Cultural Capability
- Human Rights Leadership
- Media Messaging & Story
- Systems Thinking
- Changing Organisational Culture
- Case Study
- Adaptive Challenge Assignment

2025 Program commencement dates

- Open enrolment (self-paced)

Format

This program is fully flexible and self-paced. After each module a discussion with a faculty member is scheduled to enhance and embed your learning experience. You have up to two years to finish the online modules and tutorials.

Course fees

\$4000 per person (including GST)
Group size: 15 min. 25 max.

More details and enrolment form

[Brochure link](#)

Executive Leaders Program

Best suits

This program is designed for senior executive and executive level leaders who are engaged with strategic or public purpose leadership. Participants have access to small group intensive sessions with workshop leaders. This creates a journey of intensive leadership development that draws on renowned presenters and transformative processes. The program is action-oriented towards systems thinking.

Program Modules

- Framework for Leadership
- Leadership & Governance
- Leading in Crisis
- Systems Thinking
- Global Classroom: Adaptive Challenge; Become a Futurist; U-Lab
- Policy & Strategy
- Live Case Study
- Strategic Leadership
- Adaptive Challenge – ideas into action
- Application and presentation of Adaptive Challenge project.

2025 commencement date

- Brisbane: commences 10 June

Format

There are seven in-person sessions (total 5.5 days), 8 online self-paced learning modules and 11 online group tutorials spread out over 12 months.

Course fees

\$8800 per person (includes GST)
Group size: 15 min. 25 max.

More details and enrolment form

[Brochure link](#)

Course Outlines

Adaptive Leadership Masterclass

2025 Masterclass focus: Emergency Management

Best suits

This Masterclass is for executive leaders who wish to engage in organisational, collaborative national projects on issues important to their organisation, sector and international networks. Your fellow participants will come from other jurisdictions

Program outcomes

By the end of the program you will:

- Gain valuable insight into your leadership style and its impact.
- Build your skills to manage across boundaries.
- Learn how to create a successful change process.
- Create a detailed action plan related to a specific change initiative.

Modules

- ◆ Adaptive leadership
- ◆ Public Purpose Leadership
- ◆ Trust, Integrity and Governance
- ◆ Sustainable and resilient communities
- ◆ Transformational leadership and cultural change
- ◆ Systems Thinking
- ◆ Creating desired futures for organisations and communities
- ◆ Adaptive Challenge Presentation to Executive Leaders

2025 Program commencement dates

- Melbourne: 13 May

Format

There are three in-person sessions (total 2.5 days), 3 online self-paced learning modules and 6 online group tutorials spread out over 5 months.

Course fees

\$5500 per person (includes GST)
Group size: 15 min. 25 max.

More details and enrolment form

[Brochure link](#)

International Live Case Study

Best suits

Our International leadership learning programs evolve by enhancing an internationally connected network of leaders, scholars, and practitioners. Under the stewardship of the Alliance for Leadership Learning, the Executive Challenge Academy provides these programs through its established collaborative arrangements and relevant partners in the Netherlands, the UK, NZ and the USA.

Program Outcomes

- Experience first hand diverse approaches to leadership and strategy.
- Engage in an open exchange of views — both formal and informal — with senior executives from host organisations.
- Learn about successes (and failures!) in a range of strategic, change and people management areas.
- Develop your own thinking about optimising organisational performance in a time of rapid technological change, the rapid emergence of global operating models and expanding diversity.
- A global experience and policy insights that will allow for greater knowledge sharing resulting in the ability to create actionable climate policies that better reflect first nations views, climate justice and food security.

2025 commencement date

- Netherlands: commences 12 October

Format

International intensive 6 day program at The Hague, Netherlands at the Netherlands School for Public Administration. You will help co-design the experience prior to travel.

Course fees

\$11400 per person (includes GST) Includes accommodation (travel at own expense)
Group size: 15 min. 20 max.

Review the 2024 brochure for more details

[Brochure link](#)



Participating Faculty

(Subject to change)

Dr Mark Strom

Featured speaker on how ideas shape people and people shape ideas at TEDx (Geneva) and author of *Lead with Wisdom*.

Dr John Harte

Managing Partner of Integrity Governance. John specialises in working with businesses and boards.

Professor Christine Nixon APM

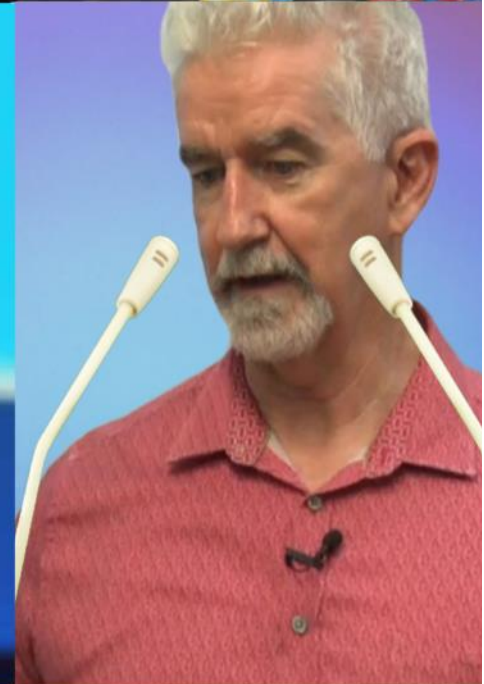
Former Victorian Police Commissioner, Bush Fire Recovery and Monash College Chair.

Professor Paul 't Hart

Professor of Public Administration at Utrecht University and Associate Dean of the Netherlands School of Public Administration in The Hague.

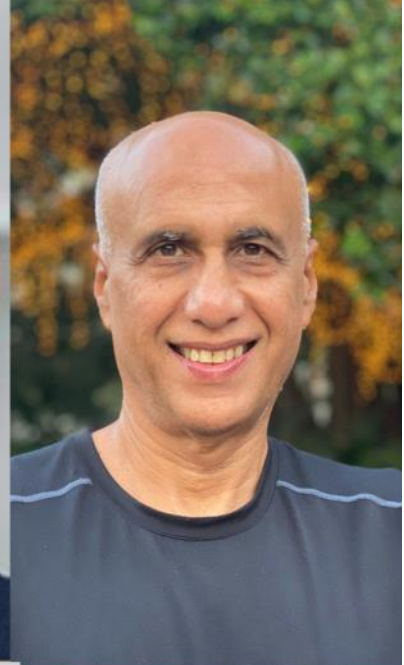
Dr Paul Gibney

Psychotherapist and family therapist in private practice in Brisbane with a Ph.D in Social Work.



Professor Anne Tiernan

School of Government and International Relations, Griffith University.



Participating Faculty

(Subject to change)

Professor Iain MacKenzie

Professor of Practice - Disaster Management Griffith University.

Dr Peter Fuda

Peter is regarded as a global authority on leadership and business transformation, and the CEO of The Alignment Partnership.

Professor Sohail Inayatullah

Inaugural UNESCO Chair in Futures Studies, Professor at Tamkang University, Taiwan and Adjunct Professor at the Centre for Policing, Counter-terrorism and Intelligence, Macquarie University, Sydney .

Professor Silke Meyer

Leneen Forde Chair of Child & Family Research, Professor of Social Work, Griffith University.

Robbie MacPherson

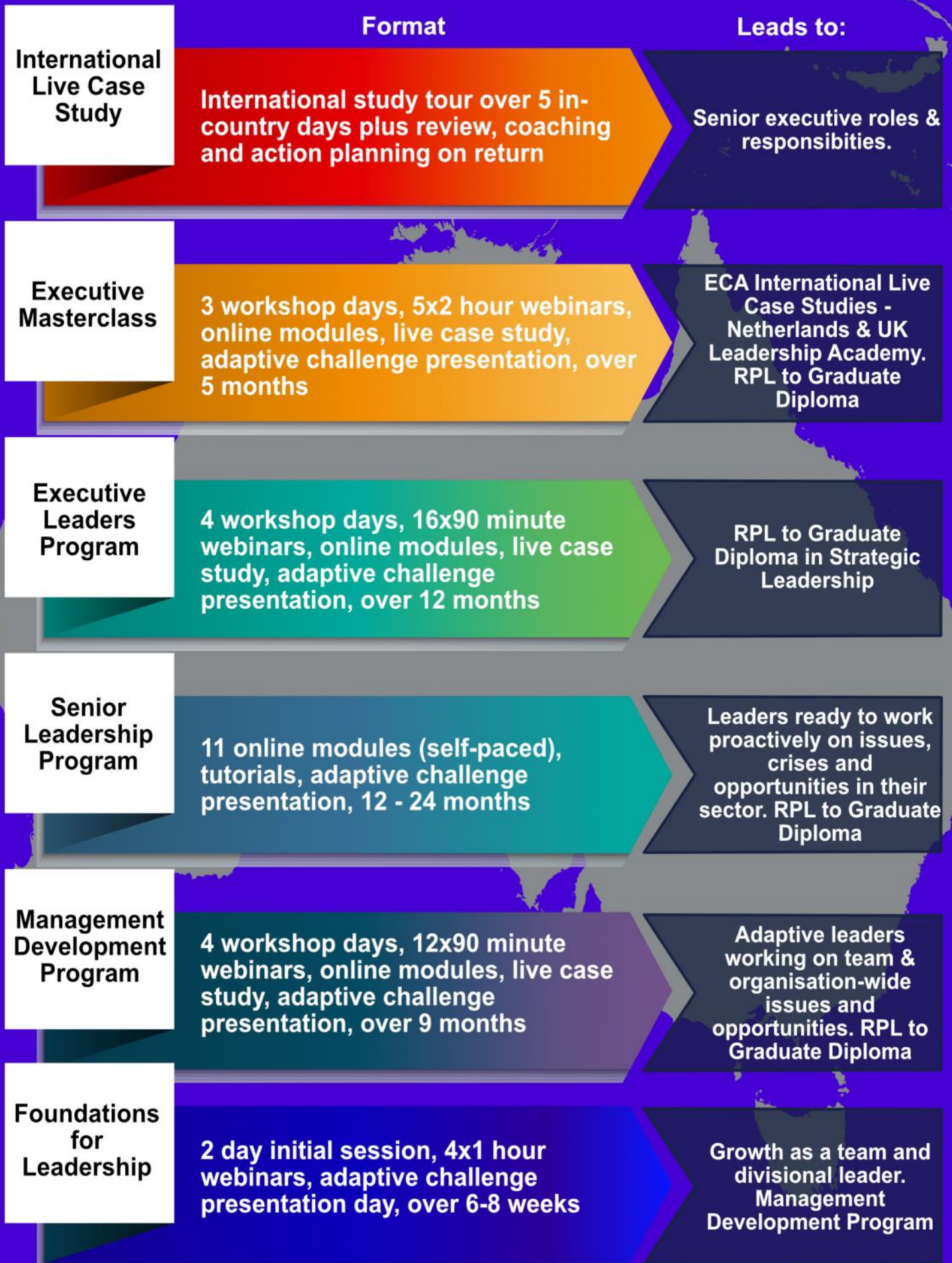
Robbie is the Managing Director of Adaptable Leadership and has worked with hundreds of CEOs across all sectors.



Professor Amanda Sinclair

Published author, academic and pioneer in diversity and women in leadership and an explorer of the application of mindfulness in leadership.







ALLIANCE FOR
LEADERSHIP LEARNING
leaders matter

ALLIANCE FOR LEADERSHIP LEARNING

ACN 634 946 240 | ABN 93 634 946 240

Get in touch

Phone contacts:

Neil Archer, Board Chair: 0418 101 585

Jan Archer, Founder: 0410 637 072

Ken Dagley, Principal, ECA: 0408 385 265

Email: info@allianceforleadershiplearning.com.au

Website: <https://www.allianceforleadershiplearning.com.au>

Mail: PO Box 248, Moffat Beach, Qld, 4551